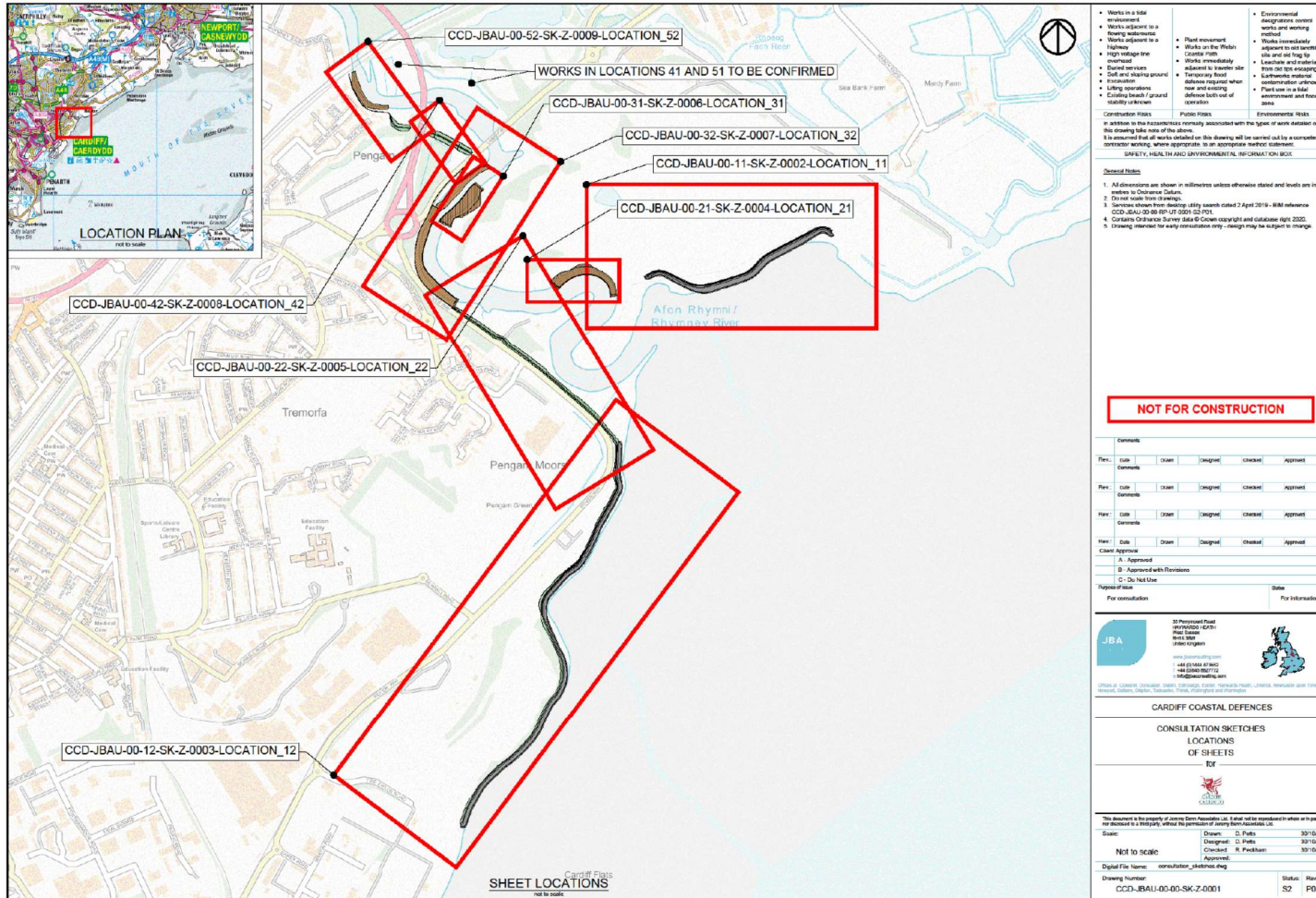
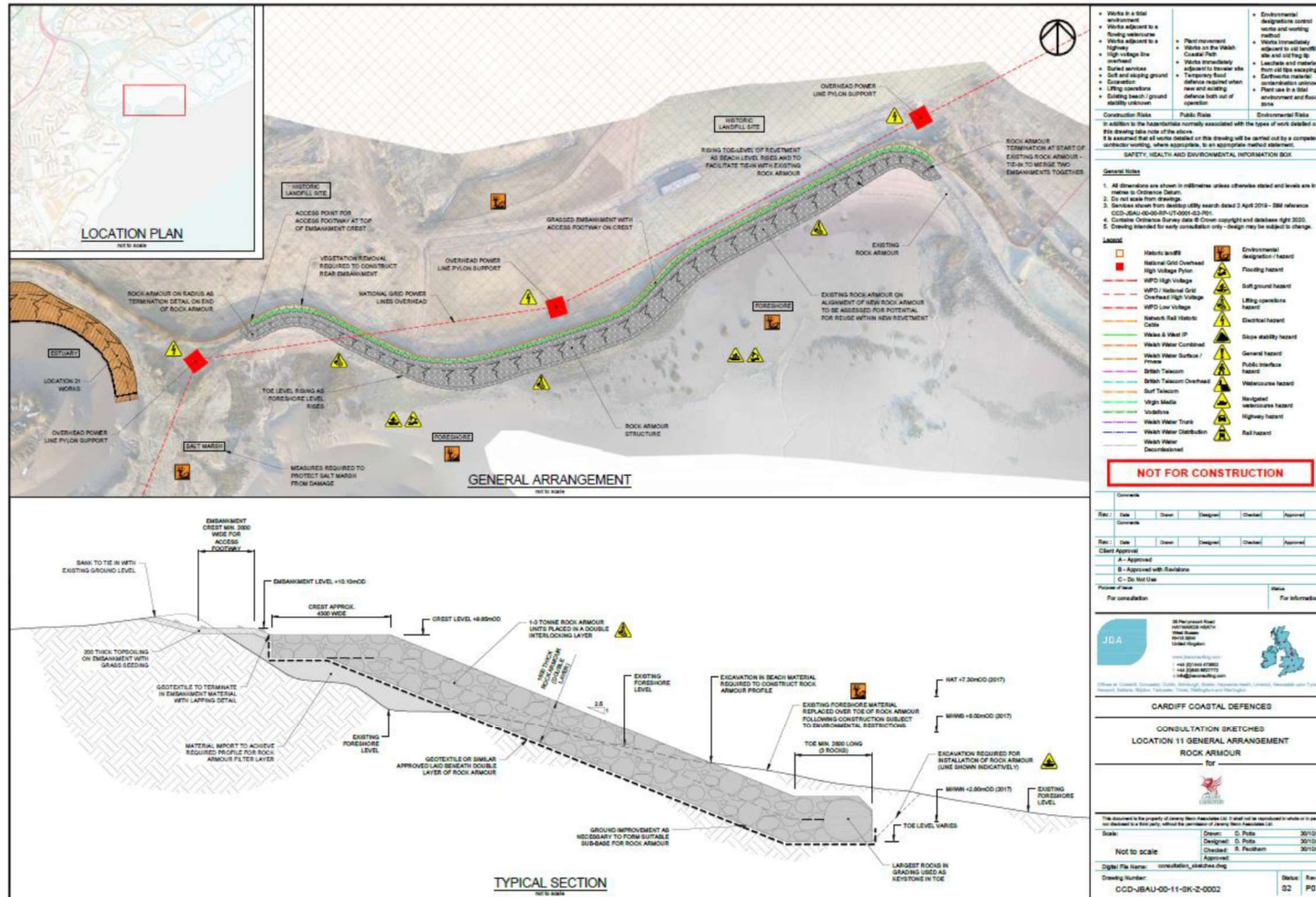


Appendix A – Layout and Design Principles



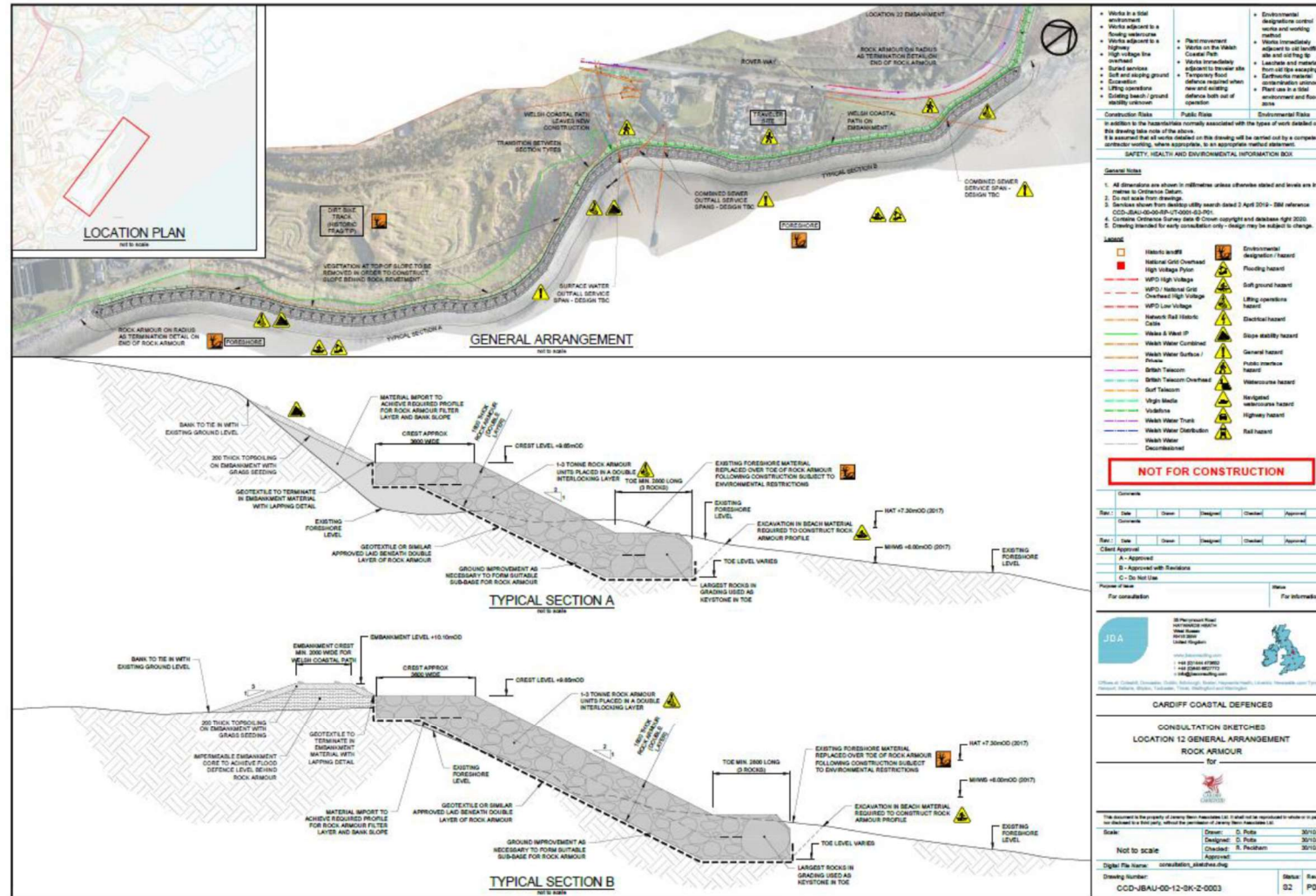
Area Layout

Appendix A – Layout and Design Principles



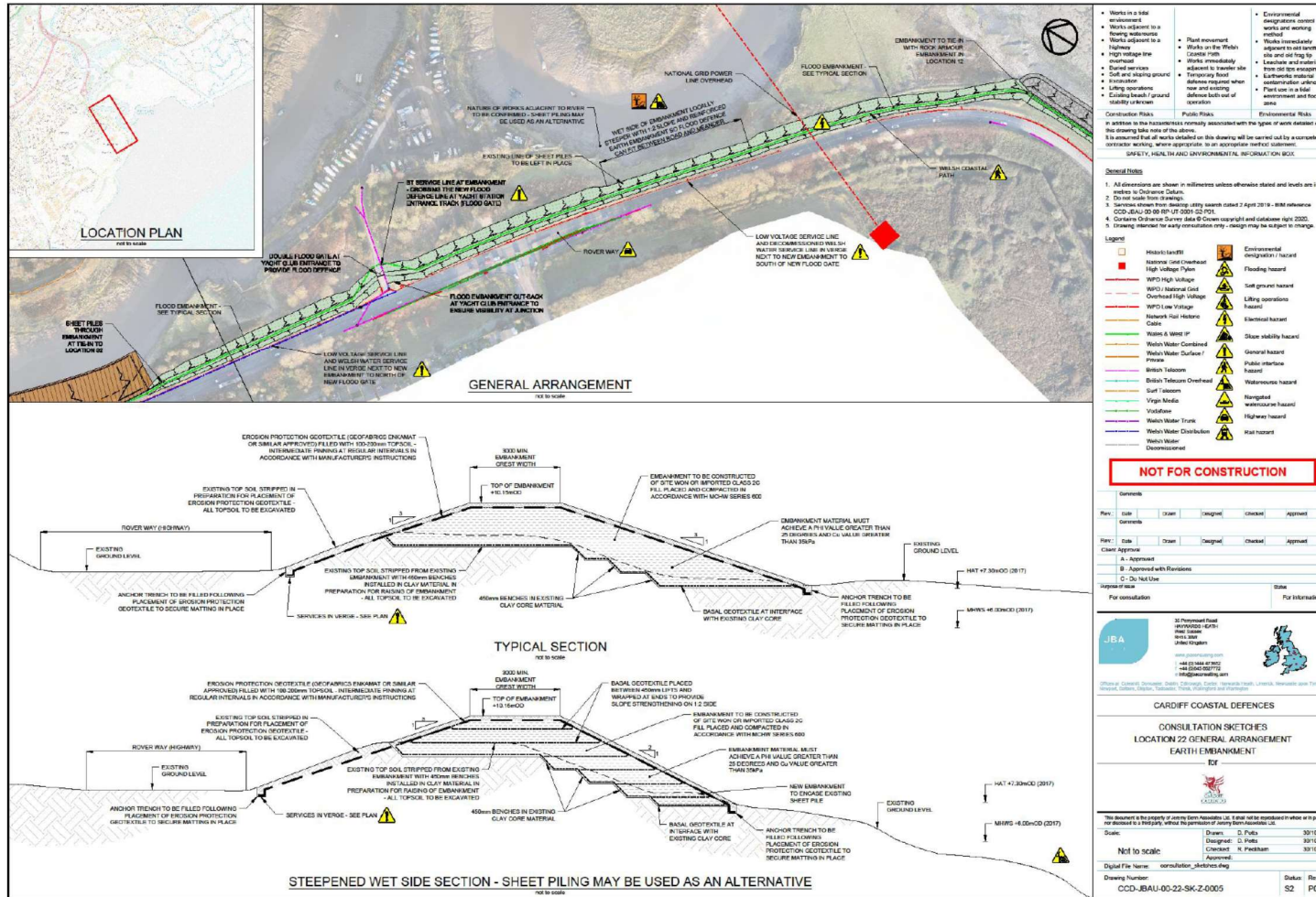
Location
11

Appendix A – Layout and Design Principles



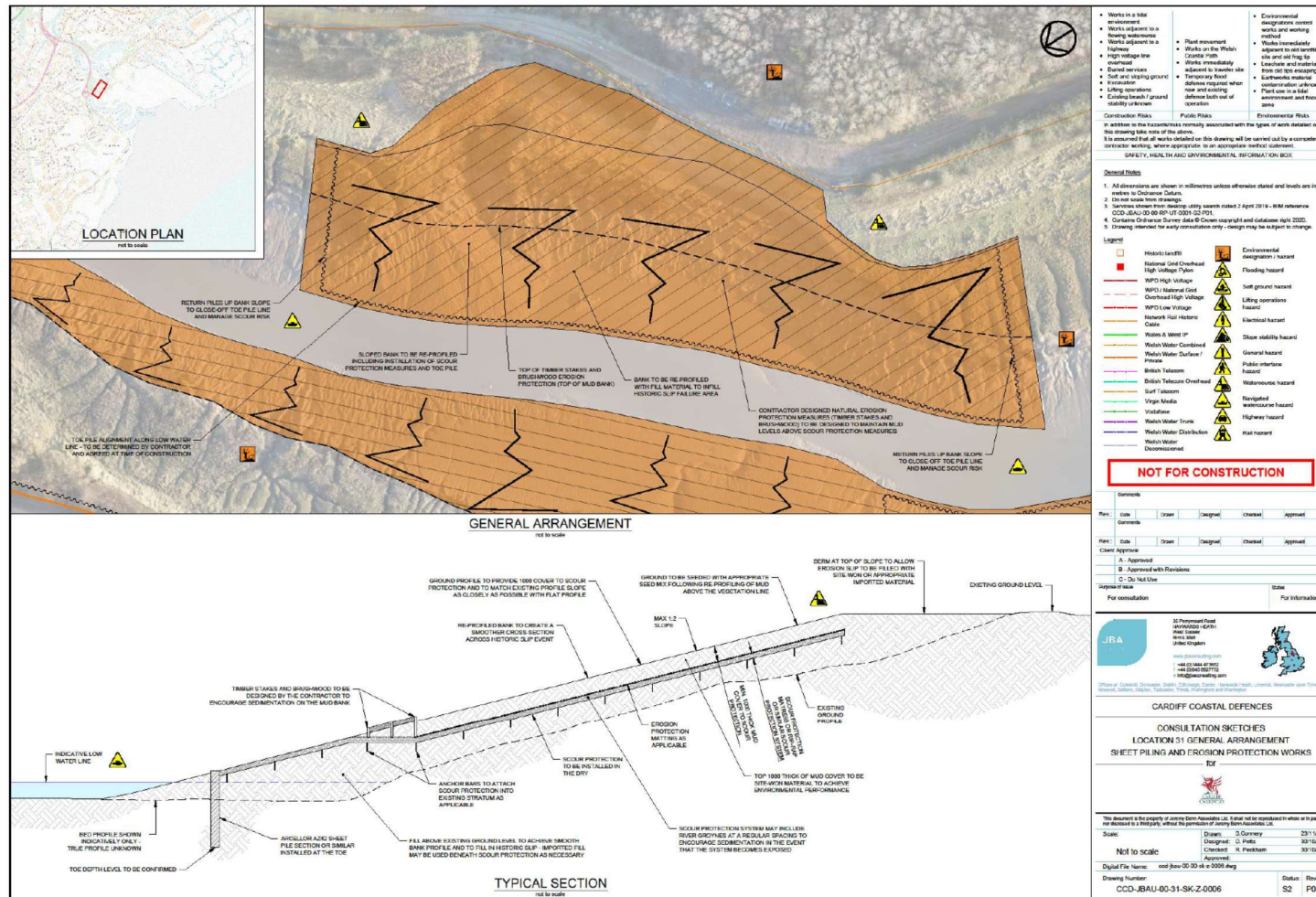
Location 12

Appendix A – Layout and Design Principles



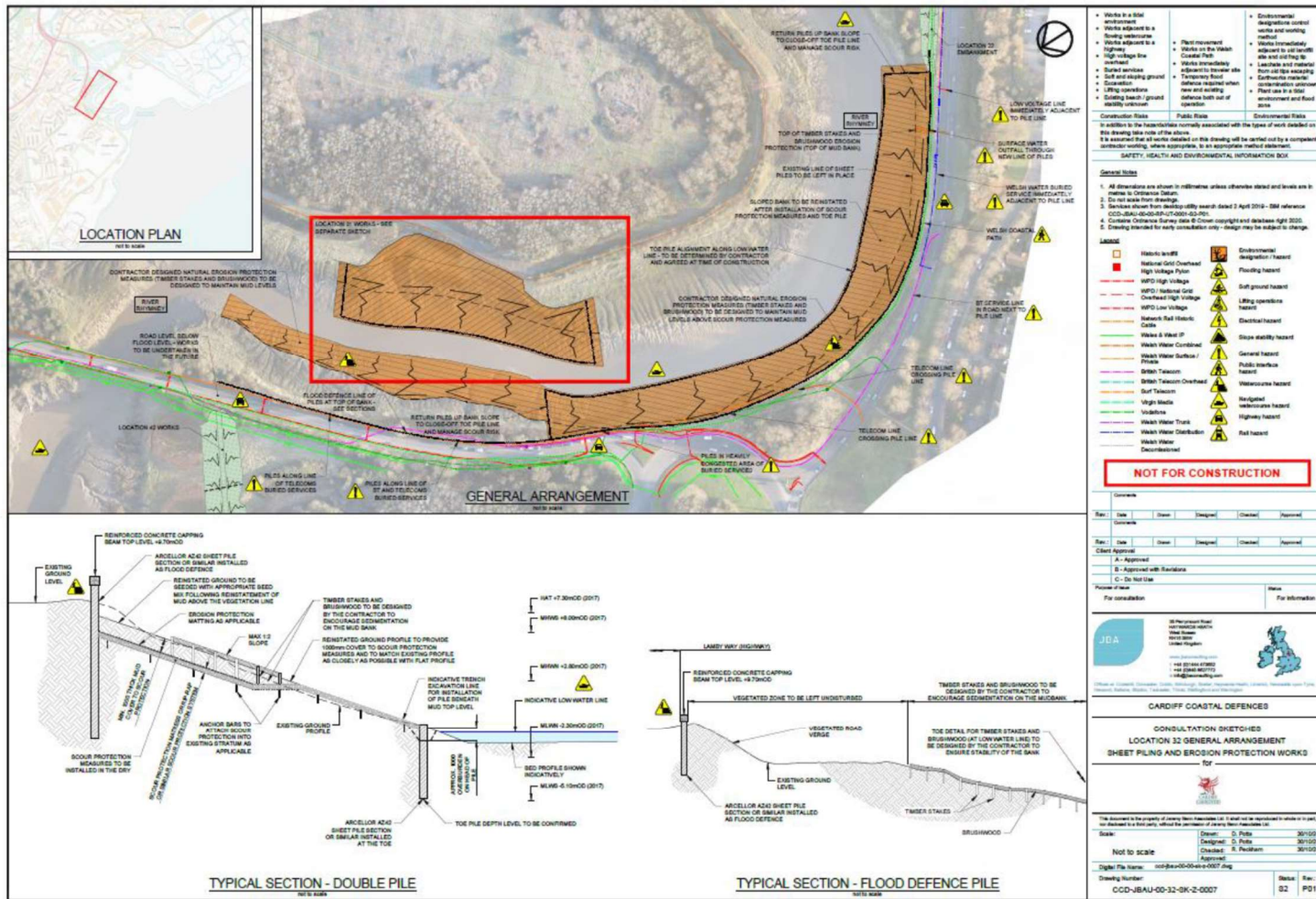
Location 22

Appendix A – Layout and Design Principles



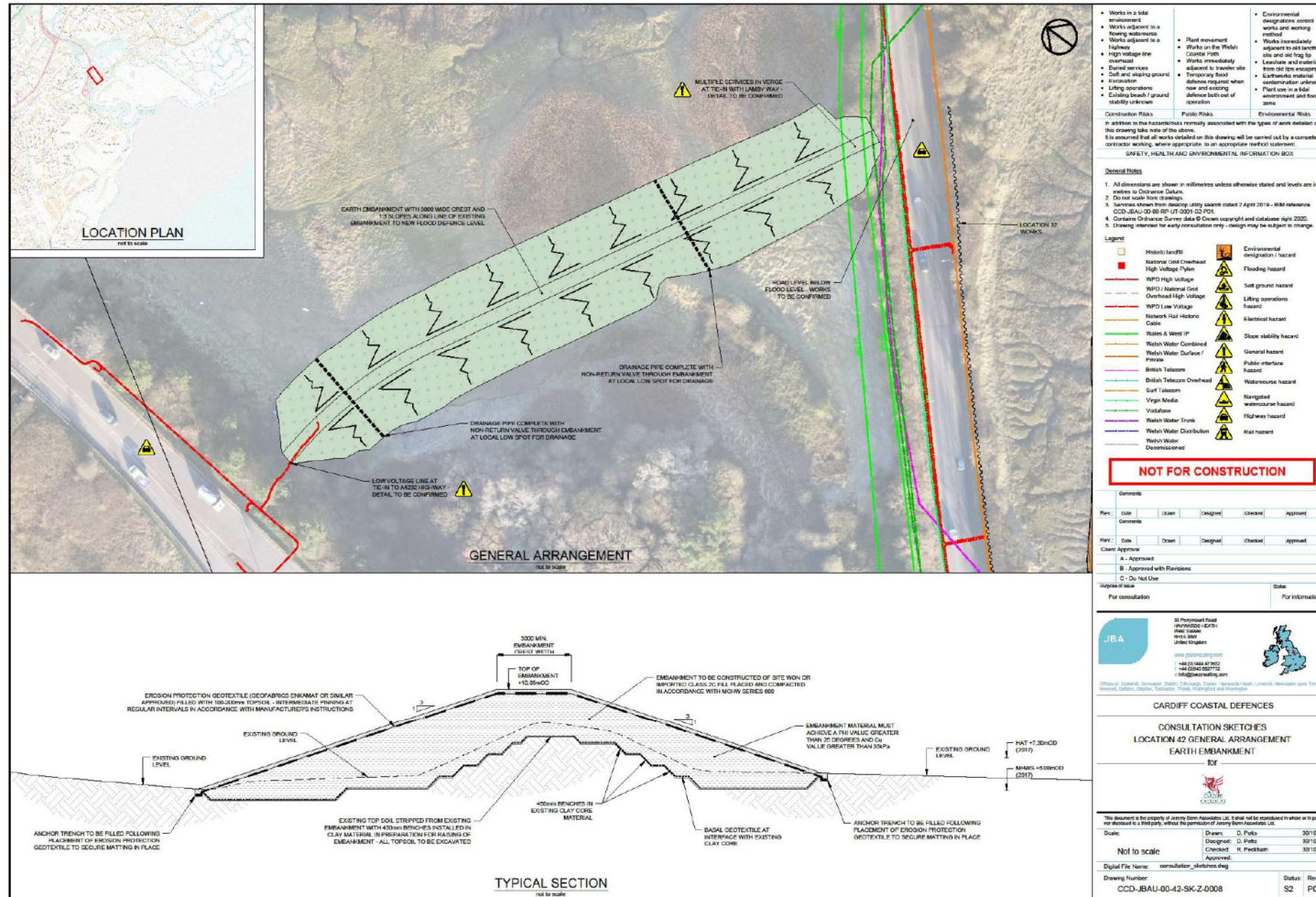
Location 31

Appendix A – Layout and Design Principles



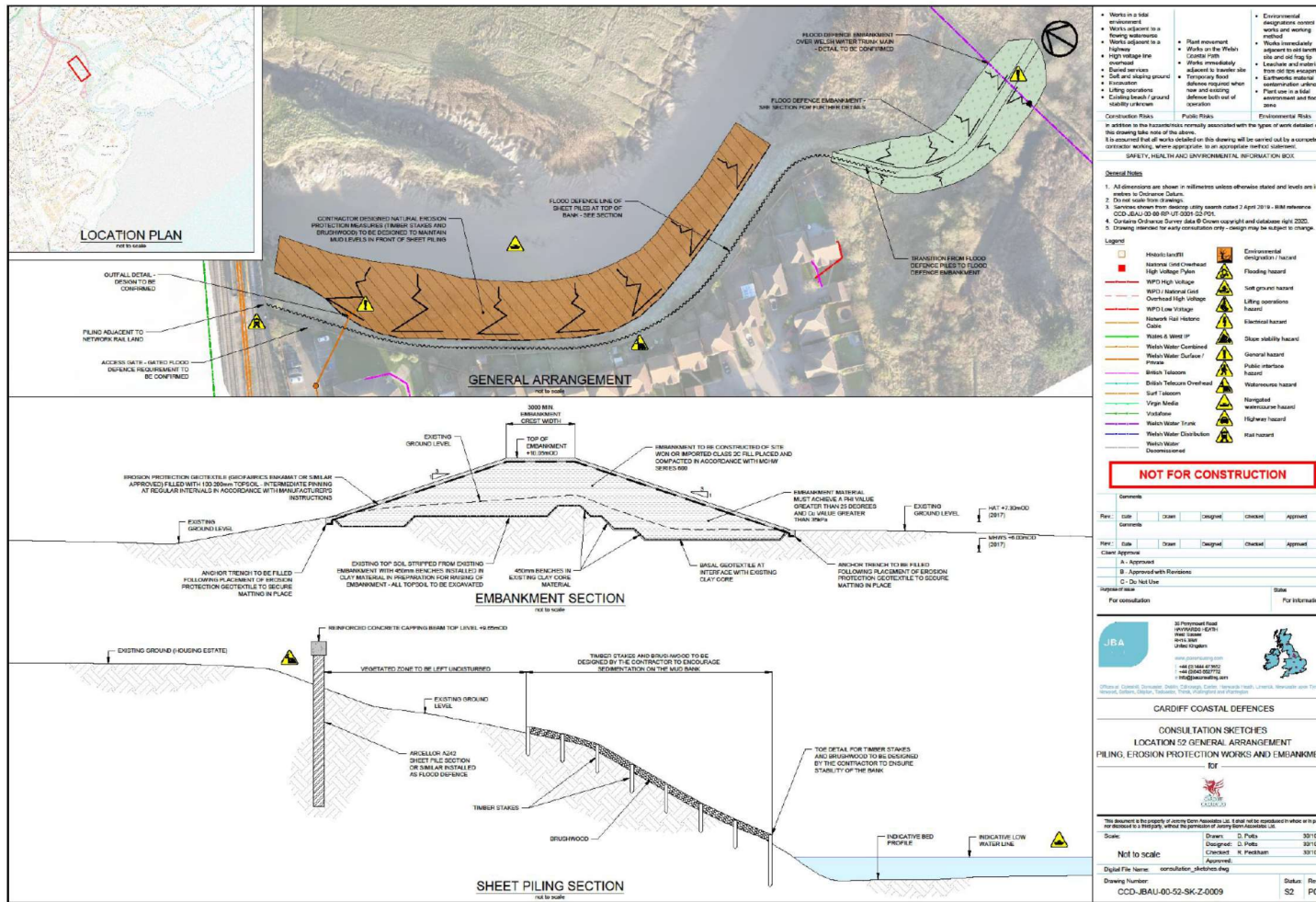
Location
32

Appendix A – Layout and Design Principles



Location 42

Appendix A – Layout and Design Principles



• Works in a tidal environment
 • Works adjacent to a flooding watercourse
 • Works adjacent to a highway
 • High voltage line overhead
 • Buried services
 • Cell and access ground
 • Living operations
 • Critical overhead ground stability unknown

• Flood movement
 • Piles on the Works
 • Coastal Frith
 • Piles immediately adjacent to lower site
 • Temporary Road
 • Services required when sea and existing
 • Access to site of operation

• Environmental designation / hazard
 • Flooding hazard
 • Soil ground hazard
 • Living operations hazard
 • Electrical hazard
 • Disease stability hazard
 • General hazard
 • Public interface hazard
 • Watercourse hazard
 • Navigable watercourse hazard
 • High water hazard
 • Rail hazard
 • Decommissioned

NOT FOR CONSTRUCTION

Comments:
 Rev: Date Drawn Design Checked Approved
 Client Approval:
 A: Approved
 B: Approved with Revisions
 C: Do Not Use
 For consultation For Information

JBA
 20 Farnborough Road
 Havant, Hampshire
 PO9 3EX
 Tel: +44 (0)1494 651770
 info@jbaconsulting.com
 www.jbaconsulting.com

CARDIFF COASTAL DEFENCES
 CONSULTATION SKETCHES
 LOCATION 52 GENERAL ARRANGEMENT
 PILING, EROSION PROTECTION WORKS AND EMBANKMENT

This document is the property of JBA and shall not be reproduced in whole or in part, or otherwise used for any purpose, without the prior written consent of JBA.

Scale: Not to scale
 Drawing: D. Pells 30/10/20
 Checked: H. Pugham 30/10/20
 Approved:

Drawing Number: CCD-JBAU-00-52-SK-Z-0009
 Date: 30/10/20
 Rev: P01

Location 52